

Omarama Hang Gliding Cross Country Classic 2026

SPONSORED BY HANG GLIDING & PARAGLIDING SUPPLIES

Saturday 31 January until Sunday 8 February, come for the whole week or just fly the days you want.

RULES AND INFORMATION:

There's no entry fee, it's free and the flying is spectacular. There's no national team points, no big prizes, no tactics, so no complaining. It's all about cross country flying, so relax, have fun and improve your XC skills, beat your personal bests and help others do the same!

Fly any site in the Omarama area, do any number of flights, any time, open distance, only your best 3 flights count. Take any days off if you like.

This is mountain/high desert thermal country so you should carry; radio, cellphone, maps, GPS, water, overnight survival gear, 2.5m tie-down rope to tie glider down during dust devils. One NZ SIM with Satellite, a satellite messenger or EPIRB and Airband radio are recommended.

SITE NOTES: Some sites are closed. Magic Mountain may be closed due to road condition. Mt Eric is closed. However, Buscot, Twinburn, Ohau and others should be available. Flights from closed sites are invalid.

DO NOT DRIVE ONTO ANY SITES WITHOUT THE LAND OWNERS PERMISSION.

- **Please ensure gates are left as you find them.** Do not leave a gate open for a following vehicle unless you stay at the gate till that next vehicle arrives to ensure that they will close it.

We appreciate a \$20 or more donation from each pilot to pay for road maintenance. Give cash to the organiser

Awards; Best total distance of your best 3 flights of the week and Best single flight distance get their names engraved on the trophies. Other honours; Best FAI Triangle, Best out and Return, Longest/hardest retrieval (driver prize).

FLIGHT ENTRY: Distance, launch, landing position and witness are to be written in each evening on the entry board held by Bill Degen (or next day if you are really late back). Better still, email flights in with your tracklog. Or enter flights in an online contest that uses IGC tracklogs and send Bill a link by txt or email. Final time for entries is on the last day at 7pm. Remote start/finish flights are allowed but pilots must provide the tracklog. Final results are dependent on tracklog verifications. For non tracklog flights, they are measured from launch to landing and require names and contact details of witnesses of launch and landing.

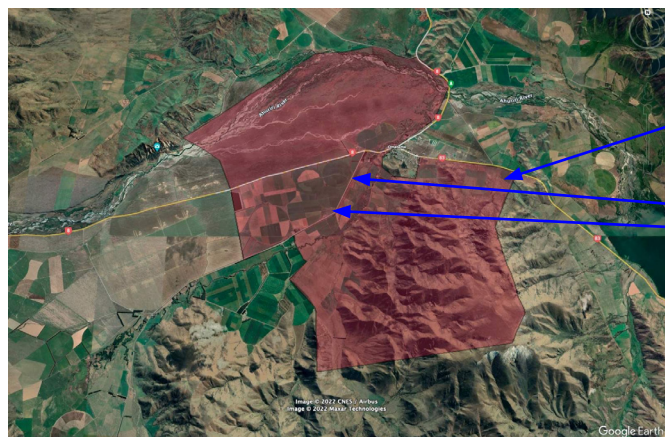
NZHGPA Full or Visitor membership is required. Flights by non-members are invalid. See <https://nzhgpa.org.nz/> for memberships.

SKILL LEVEL required; Advanced with mountain/XC skills. This is not coastal cruising; conditions can change quickly with no warning. Pilots with lower skill ratings may fly ONLY if conditions are suitable and are supervised by an instructor that is experienced and present at the site. Magic Mountain morning flights must be over by 10am to avoid downhill vehicles blocking uphill traffic on the road.

RETRIEVES: Please write your radio frequency/s & cell phone number/s on the Contact Sheet which is kept with the Entry Board so that you can be traced if missing. Try to co-ordinate retrieves with pilots/drivers in the same area with txt and/or social media. Let others know if a pilot needs a long retrieve so that several vehicles don't go after few nearby pilots.

Pilots from each vehicle and accommodation must ensure all their fellow pilots are accounted for at the end of the day. If a pilot is missing, contact the organiser or Police.

Try not to land where there's no radio/phone reception. If you don't have radio, you MUST land near main roads to avoid a Search and Rescue call out. If someone is injured we don't have much time before dark and nights are often freezing. Carry warm clothing, snack bars and water, use your wing for shelter and parachute for warmth. NOTE; If a pilot is missing and Search and Rescue need to be called, Call the Police or 111. If you call S&R, YOU will be charged.



WEATHER BRIEFINGS are at the Omarama Gliding Club at 10am. Go for a glider flight on blown out days.

DUST DEVILS can strike suddenly (especially on calm days or on the lee side). If you have a tie down, tie your glider down tight through the hang-loops and never leave it unattended. If no tiedown, loop your harness through the nose wires. Don't leave a glider unattended. **You are responsible for damage that your glider causes to other gliders or vehicles if your glider is not held down.**

OTHER AIRCRAFT; Please watch out for other aircraft, particularly sailplanes and helicopters. Do not fly low over the Omarama Airstrip. Gliders can approach at high speed, aero-towing up, or being winched up at speed. At least 4000ft clearance is recommended if crossing. There are often **helicopter** and **drone** operations near Magic Mountain and Mt Cook. Glentanner has frequent helicopter operations. Keep 2NM clear of the **Pukaki airstrip** on the highway at Twizel. It has a **commercial parachute drop zone**.

Do not fly over landed helicopters as it costs money keeping them waiting while you fly around.

A Mandatory Broadcast Zone (MBZ) covers much of the Northern Mackenzie Country. Due to the high volume of air traffic, you must use Airband radio on the MBZ frequency 118.6 MHz in the Mt Cook and Tekapo areas (roughly Northeast of Ohau). See the diamond bordered light area of the map. Pilots must broadcast every 10 minutes: their callsign ('Hang Glider' then your NZHGPA PIN number), position, altitude and direction of travel.

Airband frequencies: Omarama airfield is 119.1. The glider chat channel is 133.55. The airband hang gliding frequency is 133.35.

LANDINGS Note that landings are not permitted on Omarama station (roughly 5km east, west and south of Omarama). You can land on the old glider strip on Broken Hut Road but must remove your glider & gear straight after landing and call the landowner Richard Subtil at 027 208 9096 to let him know. Omarama station is the red area on the map.

All landings require a visit, phone call, txt or email to the relevant landowner Landowner directory is <https://omarama.net/landouts.html> If you can't find the owner on it, check nearby houses and leave a note.

You may land in the glider trailer paddock just South of the Omarama glider runway, but wash off your height south of the runway so that you don't affect incoming gliders. There is a windsock on the fence and there's shade and a cafe right there.

Emergency; Safety management plan at www.hgpg.co.nz/files/XC_Classic_Safety_Management_Plan_2025.pdf. If someone is injured, call 111 or police. If a helicopter is coming, get flying pilots away, pack up or secure nearby gliders.

For minor and superficial injuries, there is a nurse in Omarama and medical centres in Twizel, Kurow, Wanaka and Cromwell. Ring to check. Nearest hospital at Oamaru.

News, updates and results are at; www.hgpg.co.nz/page/452659

Please observe the Country Code, get high, go far, fly safely and have fun.

